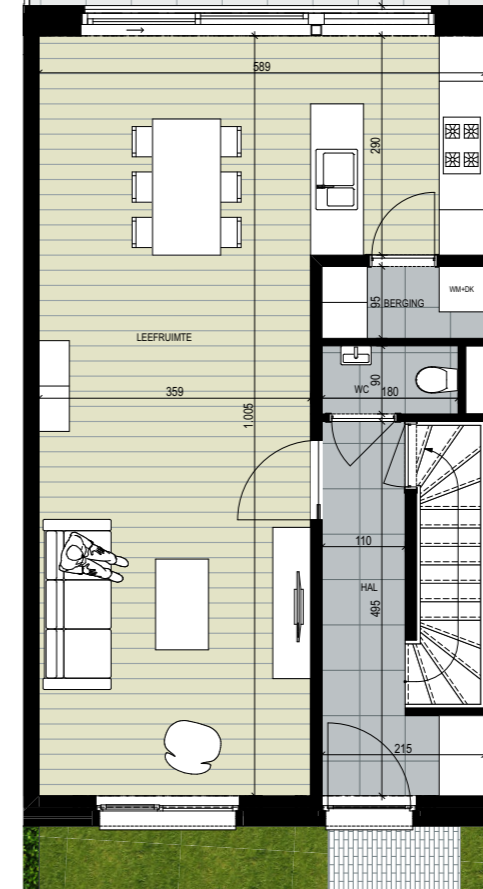


# Woning 0.2

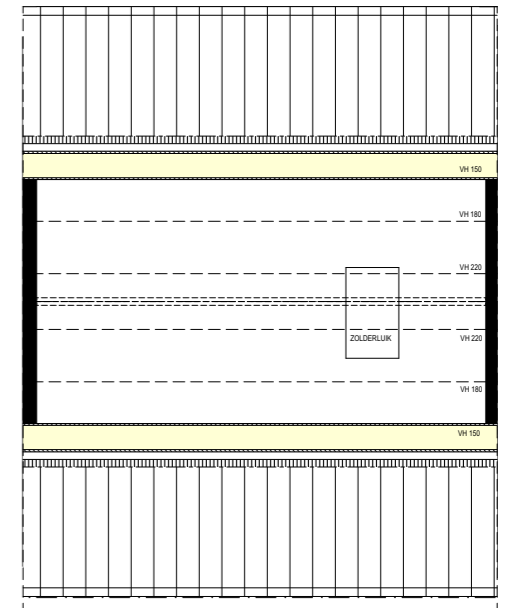
Aantal slaapkamers: 3  
 Oppervlakte woning: 117,50 m<sup>2</sup>  
 Oppervlakte terras: 21,42 m<sup>2</sup>  
 Oppervlakte tuin: 31,50 m<sup>2</sup>



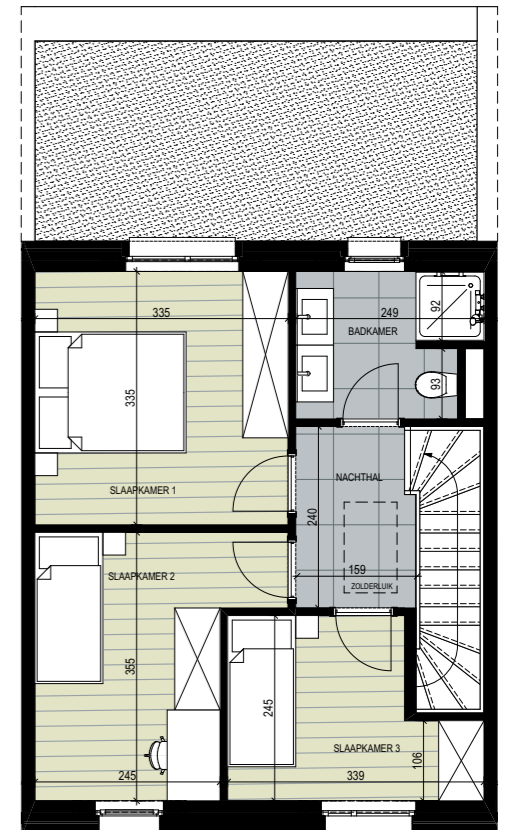
Inplanting



Gelijkvloers



Zolder



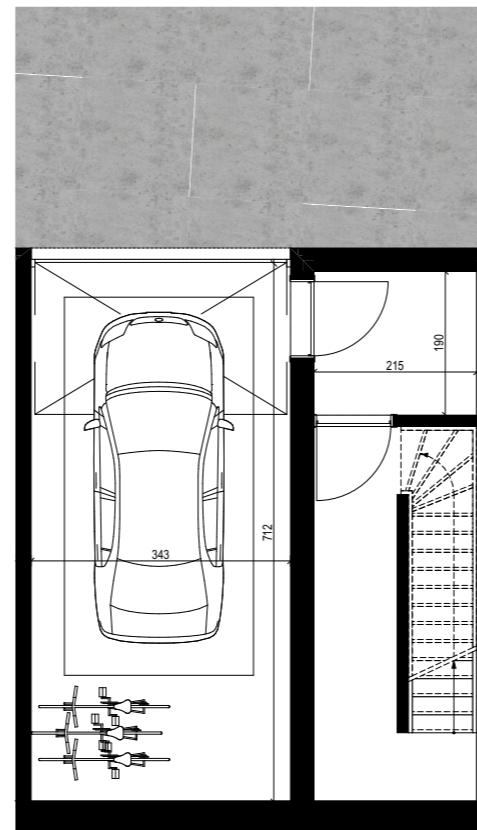
Verdieping



Voorgevel



Achtergevel



Kelder

